

THE MARVIN **CONTEMPORARY** STUDIO



**MARVIN**   
Windows and Doors  
Built around you.





## AN INVITATION TO INSPIRATION.

Large expanses of glass that connect interior spaces to the surrounding landscape. Narrow frames with clean lines. Understated modern hardware. And of course, an abundance of natural light. If you can dream it, the Marvin Contemporary Studio can build it.





## OVERLOOK RENOVATION // WASHINGTON, D.C.

*"In almost all of my projects we have large expanses of window walls. What I've found is we can work very easily with Marvin® products and come up with, in cases like this, a window wall configuration that looks custom and very, very special but actually involves primarily standard casement windows and direct set windows. The Marvin team is an invaluable asset to have at your disposal when designing a clean, modern structure."*

**- ROBERT GURNEY, Robert Gurney Architect // Washington, DC**



## MARVIN

### ARCHITECTURAL SERVICES

*"Our number one job is to turn an architect's vision into reality. Whether it's a wall of glass or uniquely sized custom windows, we work closely with architects to meet the structural and minimalist aesthetic requirements that modern architects demand."*

**- ED MARTIN, Marvin Architectural Services**



### CAPABILITIES

- Project conception and consultation
- Detailed analysis of construction documents and specifications
- Engineer complicated assemblies for large expanses of glass
- Custom and direct set windows
- Product and testing
- Unmatched customer support



See the Marvin Contemporary Studio video at:  
[MARVIN.COM/CONTEMPORARY](https://www.marvin.com/contemporary)







"Marvin® could readily provide the sizes, shapes and technical benefits of a thermally advanced window to meet the environmental demands of this northern project. The fit and finish of the aluminum clad fir windows melded beautifully and seamlessly with the interior and exterior detailing of the home."

- MALCOLM WILDEBOER,  
Vandenberg & Wildeboer Architects Inc. // Ottawa, ON



**MINIMALISM FOR THOSE WHO WANT IT ALL.**

**WEDGE HOUSE // MARVIN PRODUCTS FEATURED:**

Sliding Patio Door (XO), Outswing & Inswing French Doors (OXO), Ultimate Awning, Rectangle Direct Glaze, Polygon Direct Glaze, Ultimate Casement

---

Bronze Clad Exterior / Douglas Fir with Clear Coat Finish / Oil Rubbed Bronze Hardware

 Winner of the 2016 Marvin Architects Challenge







Situated on an elevated hilltop that serves up breathtaking views of grape and olive vineyards, Villa on the Hill was designed to maximize these views while providing ample, flexible living space for an active, growing family. Upon entering, two full stories of floor-to-ceiling window sets dramatically open the home to the valley, pulling your attention across the natural wood floors to the views below, and filling the main living space with an abundance of natural light. Energy-efficient glass throughout minimizes the impact of passive heat gain and loss.

*"I love working with Marvin®. They never say "no" to my ideas."*

**- CORINNE LEVI, Corinne Levi Architecture // Rishon Lezion, Israel**



**THE CLEANEST LINES.  
THE BOLDEST STATEMENTS.**

**VILLA ON THE HILL // MARVIN PRODUCTS FEATURED:**

Ultimate Sliding French Door (OX), Ultimate Inswing French Door, Ultimate Double Hung, Rectangle Direct Glaze, Ultimate Glider (XO, OX)

---

Ebony Clad Exterior / Pine Interior / Satin Taupe Hardware







“What we bring to every job is unmatched technical expertise and support. To us, the small details are the big details. From the earliest phases of the design process and all the way through to install we’re there to answer the tough questions, provide invaluable technical feedback, and offer the best solution that meet architects’ aesthetics, energy and structural requirements. Our deep level of dedication and passion is what truly sets us apart.”

- MARCO VINCENT, CPHC®, LEED-AP, AssocAIA, CSI



**ORDINARY SLIDES AWAY.**

**WASHINGTON STREET REMODEL // MARVIN PRODUCTS FEATURED:**

Bi-Fold Door, Sliding Patio Door, Ultimate Swinging French Door, Round Top, Ultimate Awning, Ultimate Casement, Ultimate Glider

Stone White & Cadet Gray Exterior / Pine Interior / Satin Nickel Hardware







Tucked neatly into the topography of its wooded site in the Green Mountains of Vermont, Tree House pairs open, inviting living spaces with large expanses of glass, which gradually opens the interior to the outdoors to create a strong connection to the surrounding landscape. To create the expanding perspective, and to minimize heat loss, it was necessary to use large expanses of triple pane glass with a mix of operable windows – awnings and casement. The mix of window styles allows for a variety of ways to ventilate the space.

*“From the moment we’re getting our drawings up to quarter scale, when you can really start to compose windows, we feed our Marvin® reps information to get their feedback regarding the size of the window, mulling or muntin configuration. They’re good about working through whatever structural or configuration parameters there might be, all the way through to product delivery. That’s a big part of why we like to work with Marvin.”*

**- ERNIE RUSKEY, Principal, Tektonika Studio Architects // Morrisville, VT**



**INVITE THE OUTDOORS IN.**

**TREE HOUSE // MARVIN PRODUCTS FEATURED:**

Ultimate Inswing French Door, Ultimate French Casement, Ultimate Casement, Ultimate Awning  
Pebble Gray Clad Exterior / Pine Interior / Satin Nickel Hardware







*"Marvin® windows allowed us to create the strong indoor-outdoor connection our clients desired. The ability to work with large window sizes allowed us to reduce the amount of mullions, which take away from the view and the sense of connectedness. The window's thin frames complement the modern aesthetic of the design and their thermal performance greatly contributed to this project's LEED® Platinum for homes certification."*

**- CHRISTOPHER SIMMONDS,**  
Christopher Simmonds Architect Inc. // Ottawa, ON



**ABUNDANT NATURAL LIGHT,  
AVAILABLE IN ABUNDANCE.**

**ZEN BARN // MARVIN PRODUCTS FEATURED:**

Sliding Patio Door, Ultimate Swinging French Door, Ultimate Casement, Ultimate Awning

Ebony Clad Exterior / Pine Interior / Satin Nickel Hardware







With its comfortable open floor plan, sweeping lake views and tangible connection to its idyllic waterfront site, Lake Edge is the epitome of modern lakeside living. Huge expanses of glass flood the main living space with natural light and open it to stunning views of the water. A combination of direct set and large operable windows maximize views and create an optimal balance of light and ventilation. Whimsical placement of direct glaze windows along the fireplace wall offer playful, unexpected peeks of treetops, deepening the connection to the wooded site.

*"With Marvin® you really get everything," Rehkamp Larson said. "Lots of daylight, energy efficient glass, plus great service and attention to detail. Marvin responds to our unique questions with a level of specificity that meets our design needs."*

**- JEAN REHKAMP LARSON,**  
*Principal, Rehkamp Larson Architects // Minneapolis, MN*



**AN EXTREMELY OPEN  
INVITATION TO STAY AWHILE.**

**LAKE EDGE // MARVIN PRODUCTS FEATURED:**

Ultimate Sliding French Door (OX, OXXO), Ultimate Inswing French Door, Ultimate Awning, Ultimate Casement, Ultimate Casement Picture Window, Rectangle Direct Glaze

Ebony Clad Exterior / Pine Interior / Satin Nickel Hardware







Due to the small footprint of this 430 square-foot home, window size and placement played a very important role in opening up the plan and giving each space its own distinct identity. A variety of window shapes, sizes and types were utilized throughout to respond to both function and views. This very deliberate approach to view framing lends each room its own unique vantage and connection to the outdoors, while giving the floor plan definition and a sense of place, without being static or confining.

*"I don't know if I speak for other architects, but one of the things that impresses me about Marvin® is their broad range of capabilities. They can do really contemporary, clean-lined stuff, or really traditional stuff. They have a flexible aesthetic. They make a lot of things happen. They can gang big windows together. They can build staggeringly huge windows. They have the flexibility that a lot of other companies don't have to realize these special designs. Basically, if I can come up with it, they'll make it happen."*

**- ELIZABETH HERRMANN, EH Architecture + Design // Bristol, VT**



## HOME, SWEET, TINY HOME.

**MICRO HOUSE // MARVIN PRODUCTS FEATURED:**

Ultimate Awning, Ultimate Casement, Ultimate Casement Picture Window

Cumulus Gray Clad Exterior / Pine Interior / Satin Nickel Hardware







“In between each set of windows is a 3/8” piece of plate steel. If we had done it with wood, it probably would have been at least two 2x4s. We saved about 3” of width by using steel. That was a really important factor, to have clean, thin lines to not obstruct the waterfront view. It was not difficult, Marvin® made it easy.”

- GREG TORCHIO, Torchio Architects, Inc. // Centreville, MD



## REAL WOOD TO FRAME UNREAL VIEWS.

**ALVHEM // MARVIN PRODUCTS FEATURED:**

Ultimate Inswing French Door, Polygon Direct Glaze, Rectangle Direct Glaze, Ultimate Awning, Ultimate Casement

Cumulus Gray Clad Exterior / Pine Interior Finish / Satin Nickel Hardware



See the Alvhem Case Study video at: [MARVIN.COM/CONTEMPORARY](https://www.marvin.com/contemporary)



WOOD OPTIONS

VERTICAL GRAIN  
DOUGLAS FIR

MAHOGANY

PINE



WHITE OAK

CHERRY

DOUGLAS FIR

Marvin® is committed to using sustainably sourced wood. To learn more visit [MARVIN.COM](https://www.marvin.com).

STAIN OPTIONS

PAINTED INTERIOR  
FINISH - WHITE

CLEAR COAT

WHEAT

HONEY



HAZELNUT

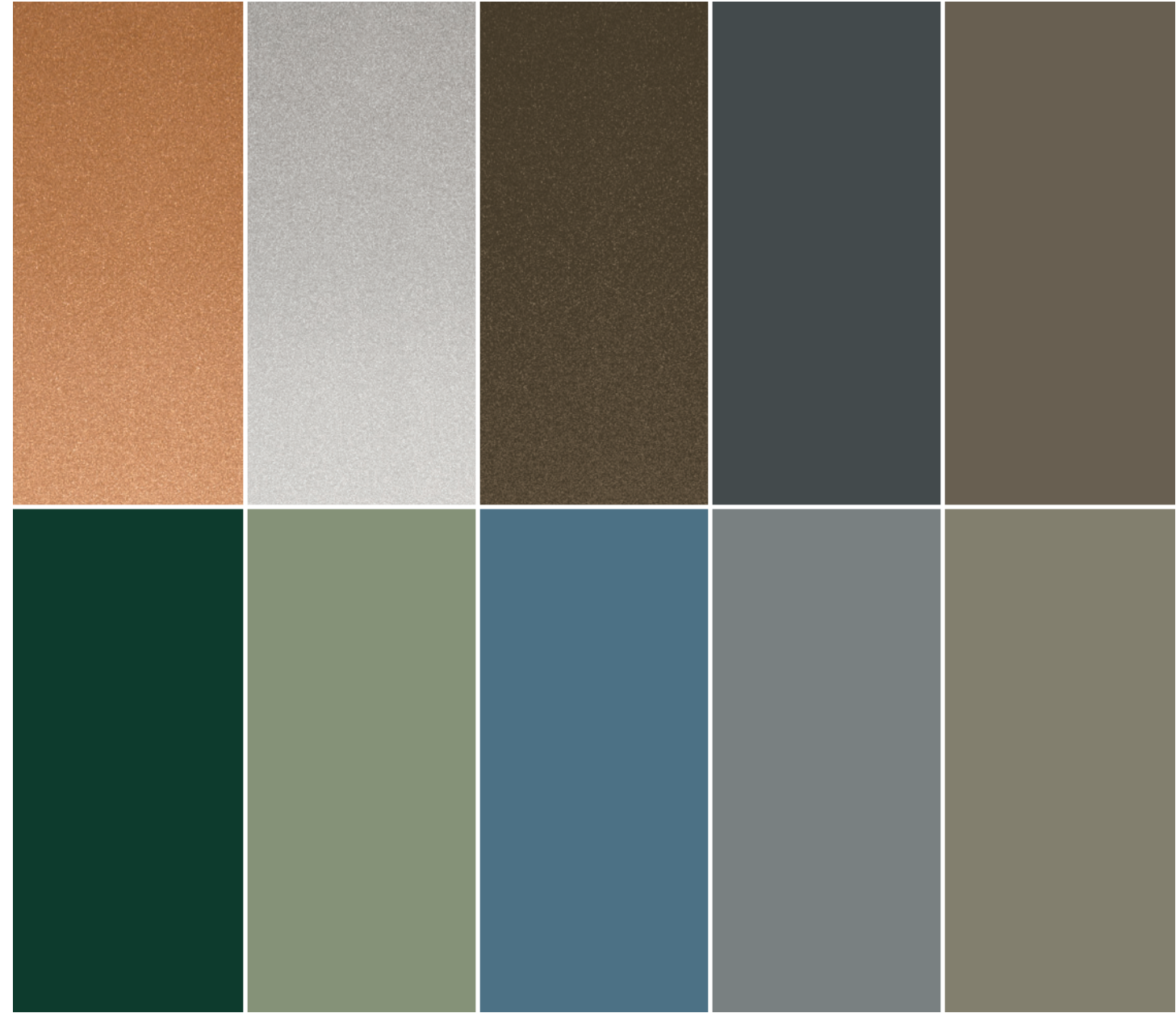
LEATHER

CABERNET

ESPRESSO



---





HARDWARE FINISHES



MATTE BLACK

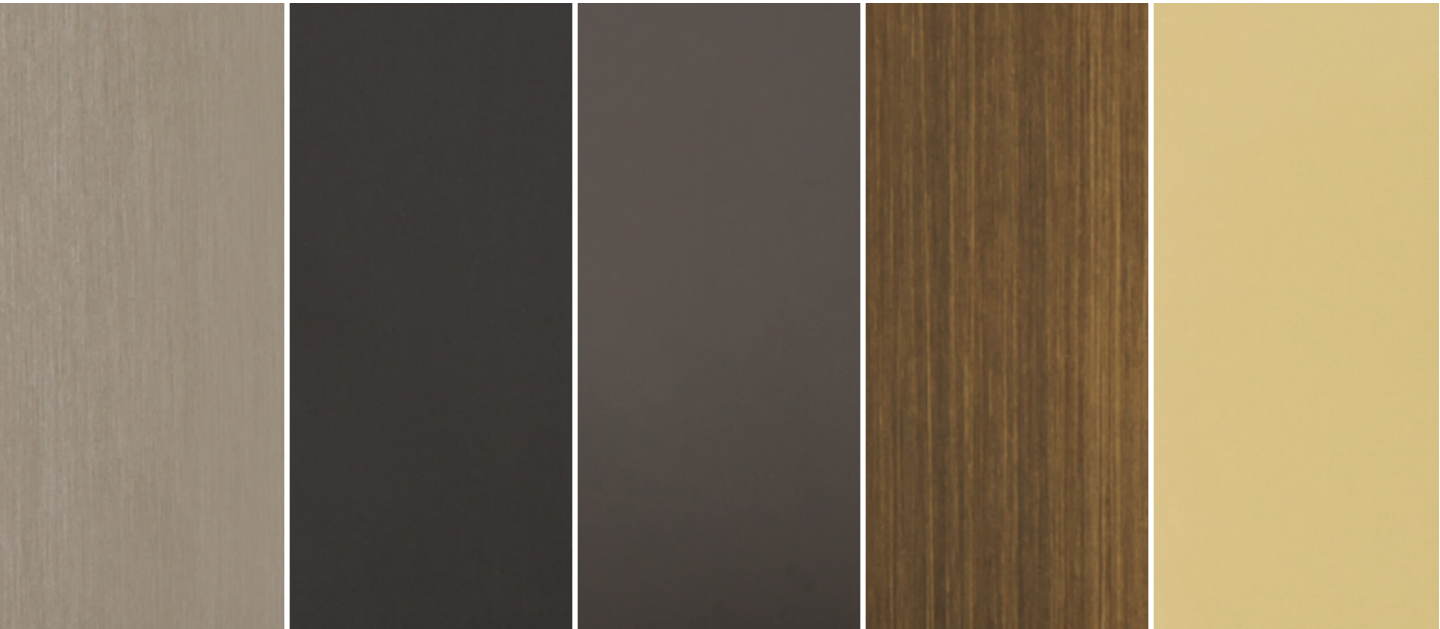
WHITE

BRONZE\*

DARK BRONZE\*\*

SATIN CHROME

POLISHED CHROME



SATIN NICKEL

OIL RUBBED BRONZE

OIL RUBBED BRONZE  
PVD

ANTIQUE BRASS

BRASS

\*Bronze available as a window hardware option only.

\*\*Dark Bronze available as a door hardware option only.





**MATTE BLACK HARDWARE: STANDS OUT BY BLENDING IN.**

MATTE BLACK WINDOW AND DOOR HARDWARE



ARROYO GRANDE – MODERN FARMHOUSE, CALIFORNIA // GAST ARCHITECTS // SEMMES & CO. BUILDERS, INC.



**THE MARVIN CONTEMPORARY STUDIO:  
SPACE, LIGHT, AIR, AND INSPIRATION.**

START YOUR NEXT CONTEMPORARY PROJECT AT [MARVIN.COM](https://marvin.com).





CHRISTOPHER SIMMONDS ARCHITECTURE

## THE MARVIN **CONTEMPORARY** STUDIO

HANDCRAFTED  
IN AMERICA. 

Marvin Windows and Doors, Warroad, MN 56763. ©2016 Marvin Windows and Doors. All rights reserved.  
®Registered trademark of Marvin Windows and Doors. Colors shown in printed materials are simulations and may not be precisely duplicate product or finish colors. Information regarding status of patent applications, and product features and specifications is subject to change without prior notice. Part #19980890 November 2016.

**MARVIN**   
Windows and Doors  
Built around you.®